

# RX61H

Intel® Socket LGA1155 32mm / 22nm CPU  
2<sup>nd</sup> / 3<sup>rd</sup> Generation Core i7/i5/i3, Celeron, Pentium

## Micro-ATX Motherboard

### User's Quick Start Card

Version 1.0

<http://www.bcmcom.com>

#### • Inspect the Package:

One **RX61H Motherboard**  
Two **SATA Cables**  
One **I/O Shield**  
One **Driver DVD (Manual/Drivers)**  
One **User's Quick Start Card**



RX61H



SATA Cable



I/O Shield



DRIVER CD

#### • Responsibility:

This manual is provided "As-Is" with no warranties of any kind, it will neither expressed or implied, including, but not limited to the implied warranties or conditions of this product's fitness for any particular purpose. In no event shall we be liable for any loss of profits, loss of business, loss of data, interruption of business, or indirect, special, incidental, or consequential damages of any kind, even the possibility of such damages arising from any defect or error in this manual or product. We reserve the right to modify and update the user manual without prior notice.

#### ⚠ WARNING: CMOS Battery Damage

Replace your system's CMOS RAM battery only with the identical CR-2032 3V Lithium-Ion coin cell (or equivalent) battery type to avoid risk of personal injury or physical damage to your equipment. Always dispose of used batteries according to the manufacturer's instructions, or as required by the local ordinance (where applicable). The damage due to not following this warning will void your motherboard's manufacturer warranty.

Perchlorate Material- Special Handling May Apply.  
See <http://www.dtsc.ca.gov/hazardouswaste/perchlorate/>

#### ⚠ ATTENTION: Incorrect BIOS Setup

If you do not know how to handle BIOS setup or how to set it up properly, it is strongly advisable that you do not modify any of the settings than otherwise instructed in the User's Quick Start Card. Even a seemingly small incorrect adjustment or modification in the BIOS setup can render your system unstable or unusable. The incorrect BIOS setup is not covered by your motherboard's manufacturer warranty.

#### • Additional Information:

Additional information on setting this board up can be found in the User's Manual in the provided CD-ROM. The Online User's Manual and FAQ/Knowledge Base can be found on our website by visiting our website: <http://www.bcmcom.com>. If your question is not answered in our FAQ/Knowledge Base, visit our forums and post your messages or submit a new FAQ through FAQ Submittal form for us to add your question in our FAQ with our answer.

#### ⚠ WARNING: Electrostatic Sensitive Device (ESD)

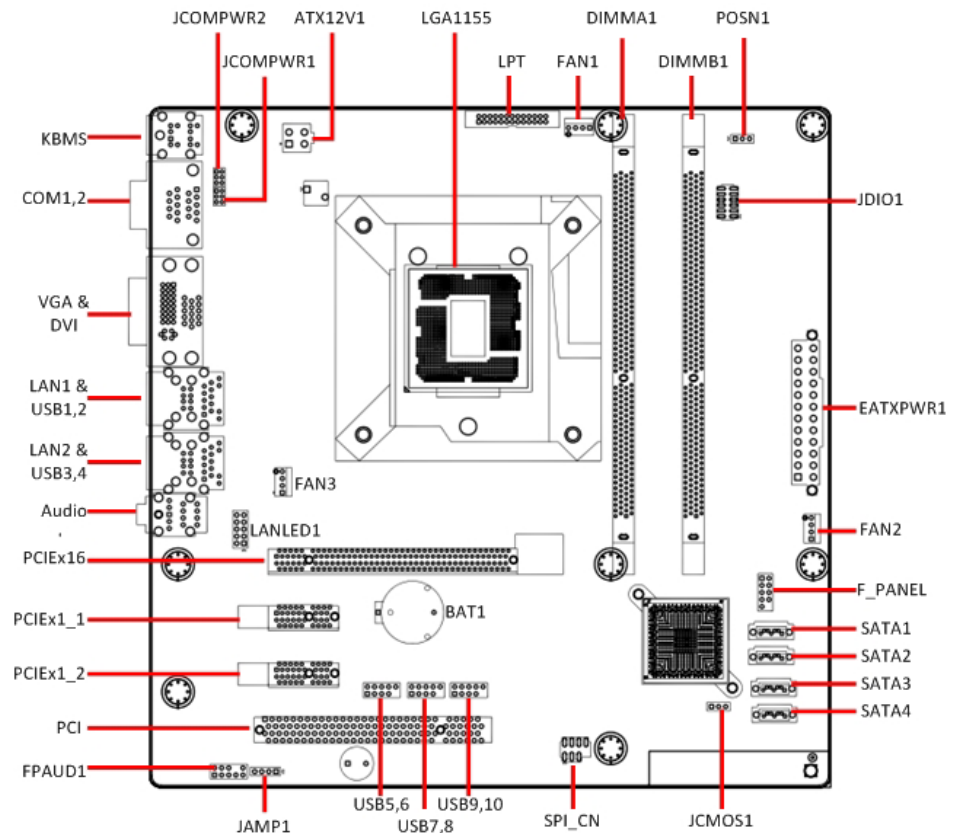
Static electricity can easily damage your motherboard and will void your motherboard warranty. Keep the motherboard and other system components in their anti-static packaging until you are ready to install them. Touch a grounded surface before you remove any system component from its protective anti-static packaging. Unpacking and installation should be done on a grounded, anti-static mat. The operator should be wearing an anti-static wristband, grounded at the same points as the anti-static mat. During configuration and installation touch a grounded surface frequently to discharge any static electrical charge that may have built up in your body. Avoid touching the components when handling the motherboard or a peripheral card. Handle the motherboard and peripheral cards either by the edges or by the peripheral card case-mounting bracket.

#### ⚠ WARNING: Misplaced Jumper Damage

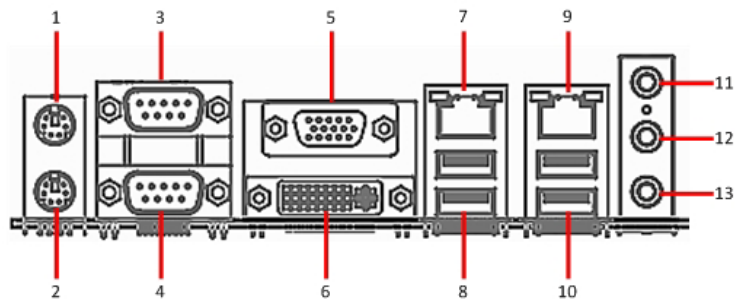
Incorrect setting jumpers and connectors may lead to damage to your motherboard and will void your motherboard warranty. Please pay special attention not to connect these headers in wrong directions. DO NOT change ANY jumpers while the motherboard has the power!

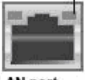
### Motherboard Layout:

#### • Board Layout:



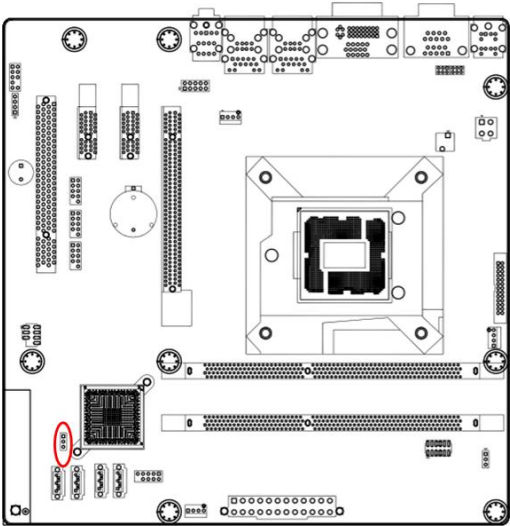
• Back Panel:



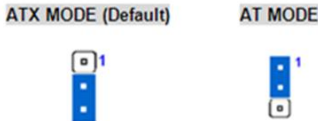
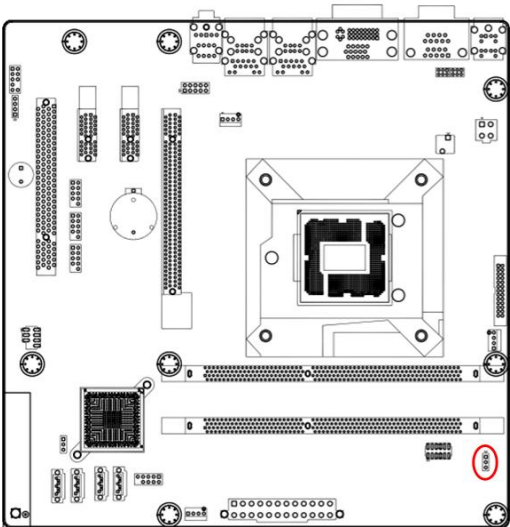
Item	Name	Function	Description																				
1	KBMS	PS/2 Mouse Connector	The port is for a PS/2 mouse.																				
2	KBMS	PS/2 Keyboard Connector	This port is for a PS/2 keyboard.																				
3 / 4	COM1/ COM2	COM Port	The RS232 9-pin Connector.																				
5	VGA	VGA Video Port	The VGA15-pin Connector.																				
6	DVI	DVI Video Port	DVI-D 24-Pin Connector.																				
7 / 9	LAN1/ LAN2	Gigabit LAN (RJ-45) Connectors <div>ACT/LINK LED    SPEED LED  LAN port</div>	<div>This port allows Gigabit connection to a Local Area Network (LAN) through a network hub. Refer to the table below for the LAN port LED indications.</div> <table><tr><th colspan="2">ACT/Link LED</th><th colspan="2">Speed LED</th></tr><tr><th>Status</th><th>Description</th><th>Status</th><th>Description</th></tr><tr><td>OFF</td><td>No link</td><td>OFF</td><td>10Mbps connection</td></tr><tr><td>Orange</td><td>Linked</td><td>Green</td><td>100Mbps connection</td></tr><tr><td>Blinking</td><td>Data activity</td><td>Orange</td><td>1Gbps connection</td></tr></table>	ACT/Link LED		Speed LED		Status	Description	Status	Description	OFF	No link	OFF	10Mbps connection	Orange	Linked	Green	100Mbps connection	Blinking	Data activity	Orange	1Gbps connection
ACT/Link LED		Speed LED																					
Status	Description	Status	Description																				
OFF	No link	OFF	10Mbps connection																				
Orange	Linked	Green	100Mbps connection																				
Blinking	Data activity	Orange	1Gbps connection																				
8 / 10	USB	USB 2.0 Connectors	These two 4-pin Universal Serial Bus (USB) ports are available for connecting USB 2.0 devices.																				
11	AUDIO	Line-in port (Light blue)	This port connects a tape, CD, DVD player, or other audio sources.																				
12	AUDIO	Line-out port (Lime)	This port connects a headphone or a speaker. In 4-channel, 6-channel, and 8-channel configuration, the function of this port becomes Front Speaker Out.																				
13	AUDIO	Microphone port (Pink)	This port connects a microphone.																				

Connectors, Jumpers, & Headers:

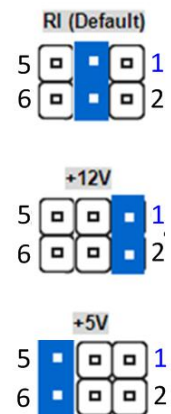
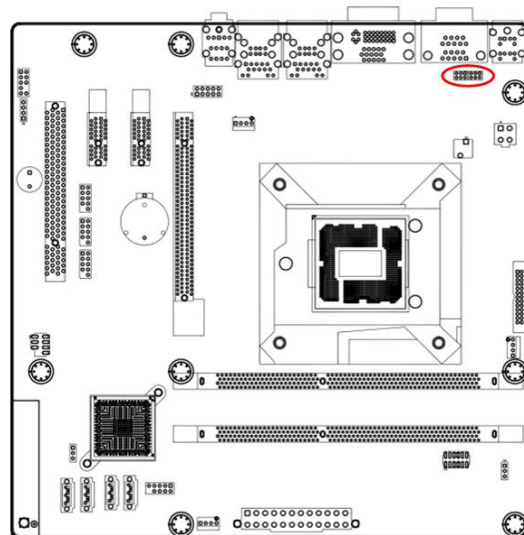
• Clear CMOS Jumper: JCMOS1



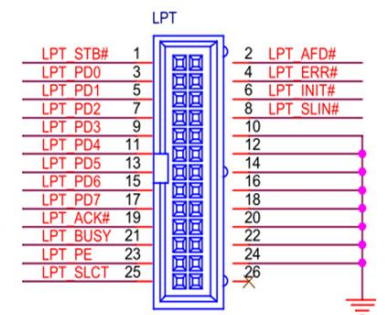
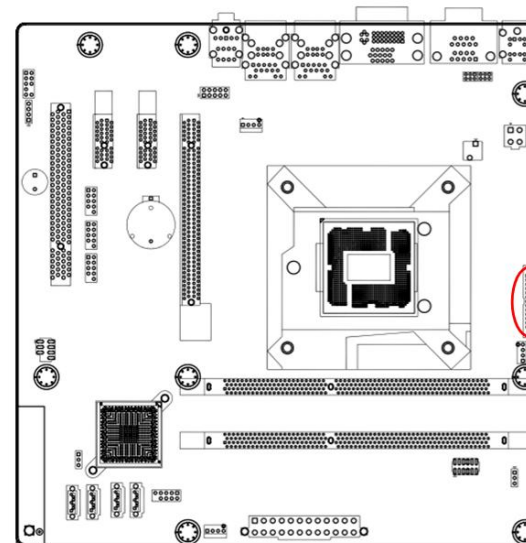
• ATX/AT Mode Selection: PSON1



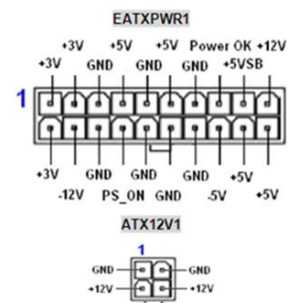
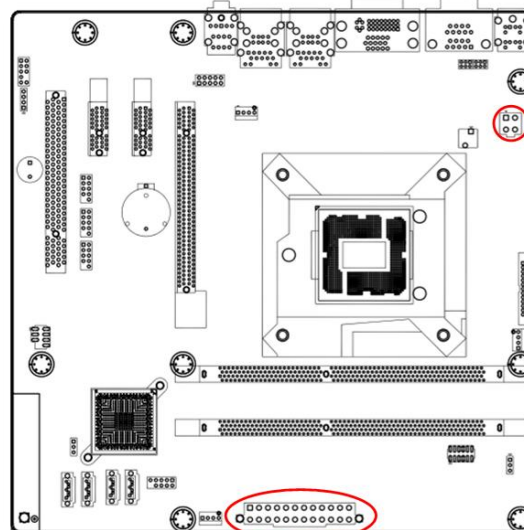
• COM1, COM2 Ring-In/ +12V/ +5V Select: JCOMPWR1, JCOMPWR2



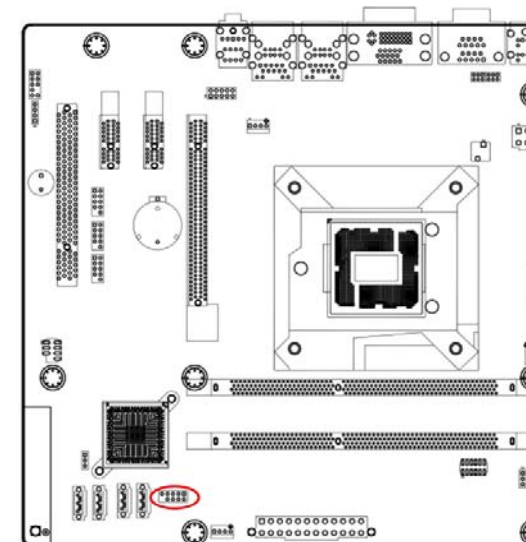
• LPT Port Connector: LPT1



• ATX Power Connectors: EATXPWR1 (24-Pin), ATX12V1 (4-pin)

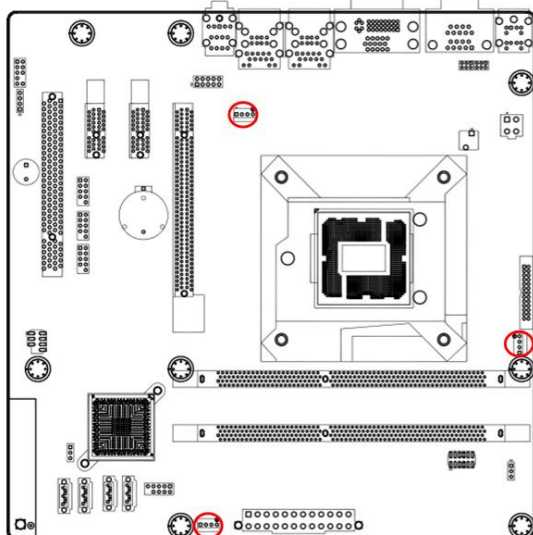


• Front Panel Connector: F\_PANEL





• Fan Connectors: FAN1, FAN2, FAN3



**FAN1**

4.	FAN_PWM1_C
3.	FANCPUDEC1
2.	+V12
1.	GND

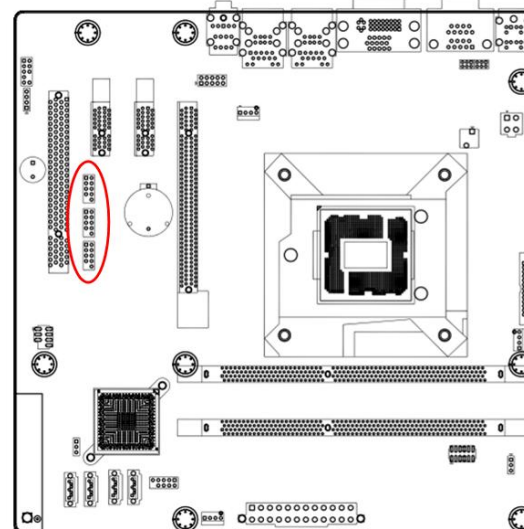
**FAN2**

4.	FAN_PWM2_C
3.	FANCPUDEC2
2.	+V12
1.	GND

**FAN3**

4.	FAN_PWM3_C
3.	FANCPUDEC3
2.	+V12
1.	GND

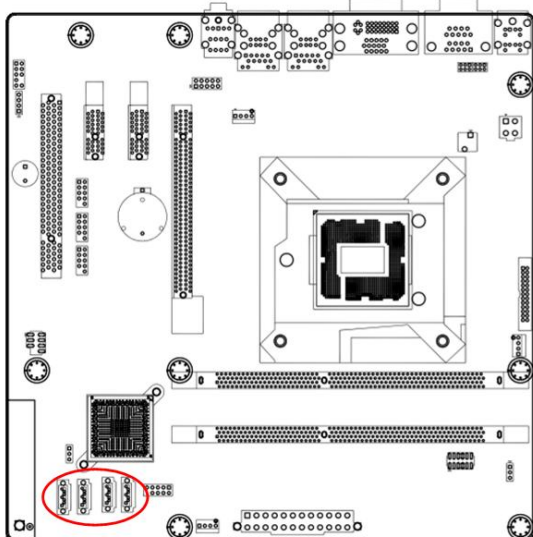
• Front USB Headers: USB56, USB78, USB910



**USB56, USB78, USB910**

1.	2.	1.USB+5V	2.USB+5V
2.	3.	3.USB -	4.USB -
3.	4.	5.USB +	6.USB +
4.	5.	7.GND	8. GND
5.	6.		9. NC

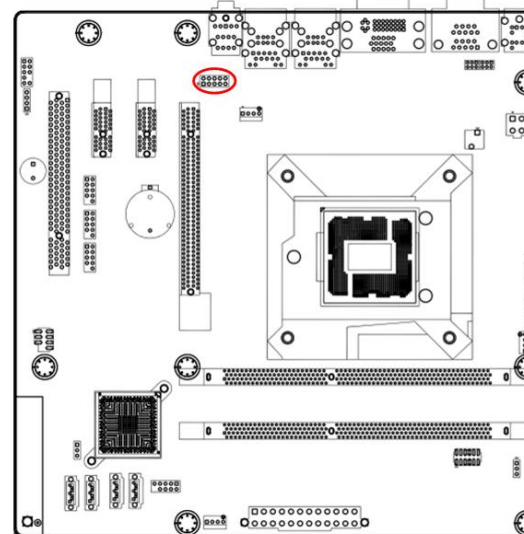
• SATA 2.0 Ports: SATA1, SATA2, SATA3, SATA4;



**SATA1, 2, 3, 4**

SATA_RXP2	GND	SATA_RXN2
GND		SATA_TXN2
SATA_TXP2	GND	

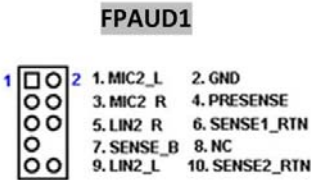
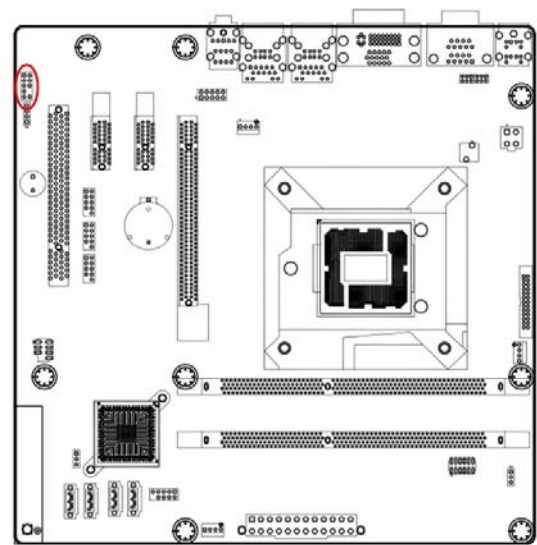
• LAN LED Header: LANLED1



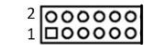
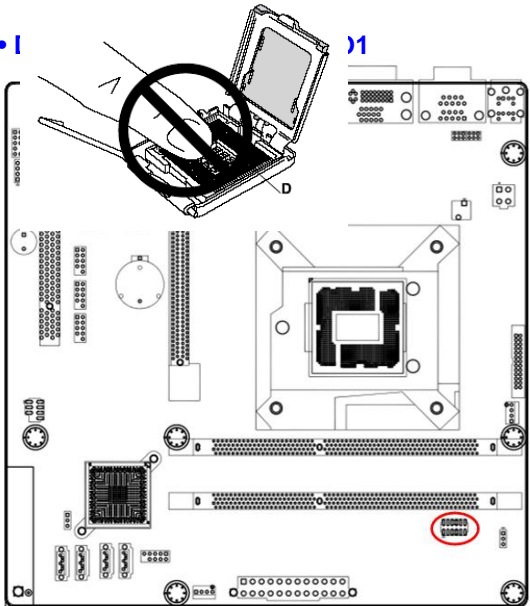
**LANLED1**

Pin1:	LAN1_LED1
Pin2:	LAN2_LED0
Pin3:	GND
Pin4:	GND
Pin5:	LAN1_LED2
Pin6:	LAN2_LED2
Pin7:	GND
Pin8:	GND
Pin9:	LAN1_LED0
Pin10:	LAN2_LED1

• Front Panel Audio Connector: FPAUD1

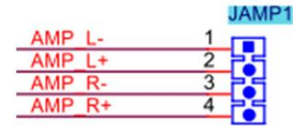
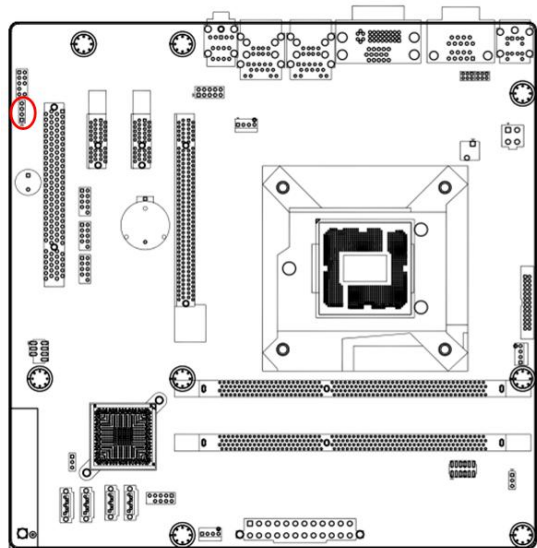


• I



- Pin1: GPIO0
- Pin2: GPIO4
- Pin3: GPIO1
- Pin4: GPIO5
- Pin5: GPIO2
- Pin6: GPIO6
- Pin7: GPIO3
- Pin8: GPIO7
- Pin9: SMB\_CLK
- Pin10: SMB\_DATA
- Pin11: GND
- Pin12: +5V

• Amplifier Connector: JAMP1



Save the Processor Socket Cover

After removing the processor cover during processor installation, please save the processor socket cover. In the event that the desktop board needs to be returned for service or any time the processor is removed, the cover should be replaced on the processor socket.



Do not Touch Socket Contact