



RiPac

/ Ordering
/ Shops
/ Queue Management

Mini POS Terminal

All-In-One Compact POS Terminal



Intel



Multi-OS
Support



P-Cap
Touch



Thermal
Printer



Speaker



NFC



RFID



2nd
display



RiPac

Mini POS Terminal



- 10.1" 16:9 with PCT Touch
- Integrated 58/80mm Thermal Printer (Optional)
- Integrated NFC Compliant with RFID/Felica
- Integrated 5" 2nd Customer Screen
- 4 Full Speed USB 2.0
- RJ-11 for Cash Drawer
- 1 Lockable DC-Jack
- 2 Powered COM in DB9

All-In-One

- 58/80mm Auto-Cut Thermal Printer with Easy Changeable Paper Roll
- Integrated NFC Reader; Compliant with RFID/Felica

High Performance

- Single Platform for Multiple OS
- Low TDP with High Stability
- Rich I/O for Retail Application

Customer Centered Design

- Full Flat 10.1" LCD with PCT
- 5" 2nd Display with Adjustable Viewing Angle
- Compact Design
299 x 316.2 x 148.9mm

Ordering



Queue Management



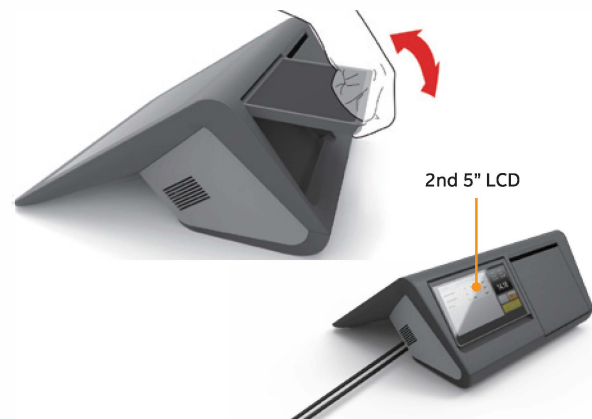
Stylish Design

- Full Flat 10.1" LCD with PCT
- 299 x 316.2 x 148.9mm Compact Size with Thermal Printer Integrated
- Integrated NFC Reader; Compliant with RFID/Felica

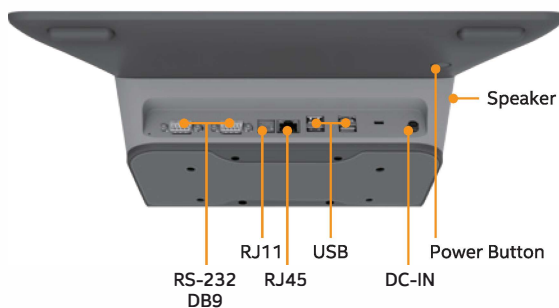


Customer Display

- 5" 2nd Display for Customer Use
- Adjustable for Best View Angle

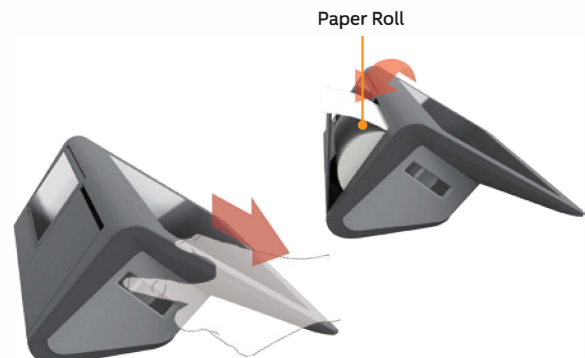


Rich I/O for Retail



Integrated Printer

- Support 58/80mm with Auto Cut Thermal Printer
- Pain-free Paper Roll Change
- Accessible Printer Module for Easy Replacement



Specification

Model Name	RIPAC-10P1
Component	
CPU	Intel® Atom™ Z3735F 1.33GHz Processor
Memory	2GB DDR3L SDRAM
Wireless LAN	Built-in IEEE 802.11 b/g/n
Bluetooth	Built-in Bluetooth 4.0 + Class 1
Operating System	Windows 8.1 / 10, Linux, Android
Storage	
Solid State Drive	32G (Default)/64G (Optional) eMMC
Panel	
LCD Panel	10.1" LCD, 5" LCD (customer facing)
Resolution	1280 x 800 (10.1"), 1280 x 720 (5")
Touch Screen	Projected Capacitive Touch
External I/O	
Serial Port	2 x RS-232 in DB9, Powered with 5/12V
USB Port	4 x USB2.0
LAN Port	1 x RJ45
Cash Drawer	1 x RJ11
NFC	ISO/IEC 14443 A/B, 15693/18092
Thermal Printer	
Printing Method	Thermal Dot Line Printing
Total Dots Per Line	576 Dots
Resolution	(W) 8 Dots/mm, (H) 8 Dots/mm
Maximum Print Speed	200mm/s
Maximum Print Width	72mm
Maximum Papert Width	80mm
Type of Paper Cutting	Full Cut & Partial Cut
Mechanical	
Power Type	19.5V/6.15A 120W Lockable Adapter
Power Connector Type	Lockable DC-Jack
Dimension	299 (L) x 316.2 (W) x 148.9 (H)mm
Weight	3KG±10%
Color	Black & Gray
Fanless	Yes
Reliability	
Certifications	CE/FCC
Vibration Test	1.5 Grms, IEC 60068-2-64, Random, 5~500HZ, 30min/axis
Shock Test	10 Grms, IEC 60068-2-27, Half sine, 11ms
Operating Temperature	5°C~40°C
Operating Humidity	0~95% non-condensing
Storage Temperature	-10°C~60°C



BCM Advanced Research
 11 Chrysler, Irvine, CA 92618 USA
 Tel: +1-949-470-1888
 Fax: +1-949-470-0971
 E-mail: BCMSales@bcmcom.com
 Web: www.bcmcom.com



All specifications are subjects to change without notification.
 All brand names and registered trademarks referred to in this catalog are the property of their respective companies.
 Copyright © BCM Advanced Research, an Avalue Company