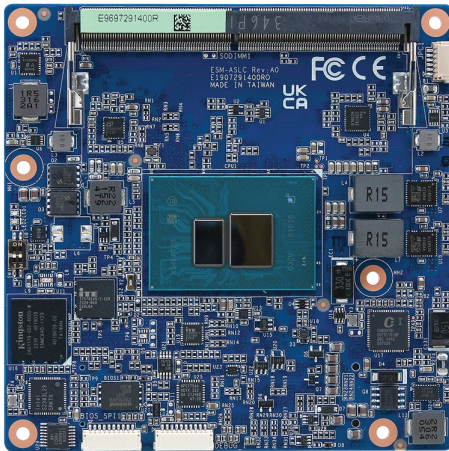




ESM-TWLC

Type6 Compact COMe Module with BGA Intel® Processor N150, Intel® Processor N250, or Intel® Core™ 3 Processor N355



Features

- Type6 Compact COMe Module with BGA Intel® Processor N150, N250, or Intel® Core™ 3 Processor N355
- Formerly Intel® Twin Lake Platform
- 1 x 262-pin DDR5 4800MHz SO-DIMM socket, supports up to 16GB Max, support In-Band ECC memory protection (selected SKUs)
- Supports 3 Independent Display
- 1 x Intel® Ethernet Controller I226-V (2.5GbE)
- Intel® Integrated HD Audio
- eMMC 5.1 Up to 128GB (Optional)
- 4 x PCIe Gen3 x1 or 1 x PCIe Gen3 x4 or 2 x PCIe Gen3 x1
- Optional TPM 2.0
- COMe Type 6 Compact Size: 3.74" x 3.74" (95 x 95 mm)
- DC in +9V ~ +19V

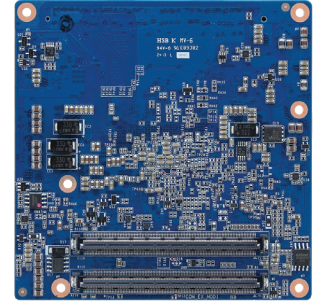
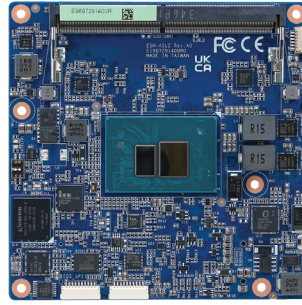
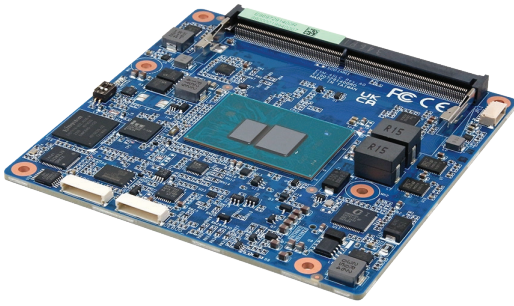
SPECIFICATIONS



System	
CPU	Intel® Processor N150 Intel® Processor N250 Intel® Core™ 3 Processor N355 Formerly Intel® Twin Lake Platform
System Memory	1 x 262-pin DDR5 4800MHz SO-DIMM socket supports up to 16GB
BIOS	AMI uEFI BIOS, 256 Mbit SPI Flash ROM
I/O Chipset	EC ITE IT5782VG-I-128/BX or Equivalent
Ethernet	1 x Intel® Ethernet Controller I226-V (2.5GbE)
Audio	Intel® HD Audio Integrated on CPU
Storage	eMMC 5.1 Up to 128GB (Optional)
Watchdog Timer	H/W Reset, 1Sec. ~ 65535Sec. and 1Sec./Step
H/W Status Monitor	CPU temperature monitoring Voltages monitoring CPU fan speed control
Expansion	4 x PCIe Gen3 x1 or 1 x PCIe Gen3 x4 or 2 x PCIe Gen3 x1
TPM	TPM 2.0 (Optional)
OS Support	Windows 11 64-bit Linux
Display	
Chipset	Intel® UHD Graphics
Resolution	1 x HDMI 2.0b: 4096x2160 @ 60Hz 1 x DP 1.4a: 4096x2160 @ 60Hz 1 x LVDS (via eDP-to-LVDS): 1920x1080 @ 60Hz Optional 1 x eDP 1.4b: 4096x2160 @ 60Hz
Multi-Display	Supports 3 Independent Display

I/O	
USB	8 x USB 2.0, 2 x USB 3.2 Gen 2x1 or 8 x USB 2.0, 4 x USB 3.2 Gen 2x1 or 8 x USB 2.0, 4 x USB 3.2 Gen 2x1
SMBus	Supports 1 x SMBus
COM Port	Supports 2 x UART (RX/TX Only)
GPIO	Supports 1 x 8-bit GPIO
SATA	Supports 2 x SATA III or N/A
MIO	Supports 1 x LPC, 1 x eSPI, 1 x I2C, 1 x SPI
Mechanical and Environment	
Power Requirement	+9 ~ +19V
Power Type	AT/ATX
Operating Temperature	0°C ~ 60°C (32°F ~ 140°F)
Storage Temperature	-40°C ~ 75°C (-40°F ~ 167°F)
Operating Humidity	40°C @ 95% Relative Humidity, Non-condensing
Certification Compliant	CE, FCC Class, RoHS Compliant
Form Factor	Compact COM Express (COMe) Module
Dimensions	3.74" x 3.74" (95 x 95 mm)
Weight	0.16lbs (0.07kg)

SPECIFICATIONS / ADDITIONAL PRODUCT PHOTOS



BLOCK DIAGRAM

ORDERING INFORMATION

Model Name	CPU	Description
ESM-TWLC		Please contact BCMSales@bcmcom.com for details.

PACKING LIST

✓ 1 x ESM-TWLC COMe module



BCM Advanced Research

Tailored Hardware Solutions, Delivered with Excellence:
Your Go-To Partner for Industrial Computing Design



BCMSales@bcmcom.com
www.bcmcom.com



11 Chrysler
Irvine, CA 92618 USA

intel
partner
Titanium